

ialuadapter[®]

Bladder instillation in the female patient

How to use ialuadapter[®] with ialuril[®] Prefill

Before starting the treatment, the patient is asked to urinate and empty her bladder completely before the instillation.

The first step before using ialuadapter[®] is to unwrap the prefilled syringe from its packaging (1) and remove the sealing cap (2).

Then, fix ialuadapter[®] onto the syringe (3). A half twisting motion will enable you to fasten it safely onto the luer lock syringe and achieve a stable attachment.

Hold the sterile adapter by the ribbed centrepiece only (make sure you do not touch the isolating collar or the radiused tip).



Preparation of the female patient

Ask the patient to lie supine and spread her legs, pulling her knees as far apart as possible. Open up the small labia using your index and middle fingers, making sure the urethral opening is visible (4).

It is very important to disinfect the area surrounding the urethral opening and the entire area of the small labia thoroughly, using a suitable solution for skin and mucosae (e.g. iodine solution).

It is important to know that the fingers used for exposition should lie as close to the orifice as they can be. The exposition has to happen by pulling the labia apart laterally (and not only upwards).



ialuadapter[®]

Catheter-free instillation

Now pick up the syringe. We recommend squeezing a few drops of the viscous solution out of the tip of ialuadapter[®] to release the air from the syringe. This maneuver allows to lubricate the tip of ialuadapter[®] and therefore to protect the mucosa of the urethral opening from injury (5).

After the radiused short tip is placed into the urethral orifice, press ialuadapter[®] against the orifice with continuous gentle pressure to make the entire surface of the isolating collar fits over the peri-urethral mucosa, forming a closed space with the syringe (6).

If there is not enough pressure, the collar cannot cover the nearby tissues properly and the opening remains “unplugged”. By applying more pressure, the flexible collar can adapt itself to the surface of the nearby tissues and the orifice will be sealed properly, preventing leakage of the injected solution.

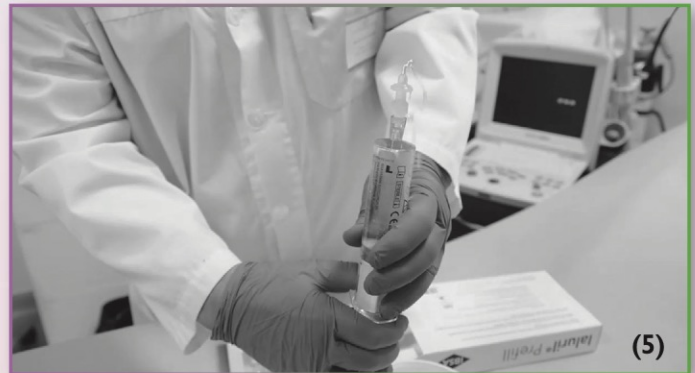
Find the correct vertical angle of the urethral axis leading ialuadapter[®] at a 45-degree downwards; then look for the appropriate angle for the syringe by lowering or elevating its distal end until you find much less resistance from the syringe piston, indicating that the correct angle has been achieved.

Once ready, slowly instil all the solution contained in the syringe into the bladder through ialuadapter[®].

Keep ialuril[®] Prefill in the bladder for as long as possible (minimum recommended time: 30 minutes) and occasionally ask the patient to move from side to side to enable the ialuril[®] solution to cover the entire layer of the urothelium.

When the product has been instilled into the bladder, carefully remove the syringe and dispose of ialuadapter[®].

Sometimes it is normal to observe a few drops of ialuril[®] solution coming out of the urethra.



Critical cases

The urethral opening can interfere with easy application of ialuadapter[®]:

- if the urethral opening is located too deep
- if it is cicatricose, or cannot be made visible
- if, mainly in older patients, the strictured vaginal opening is covered in scars.